



## Brilliance™ Salmonella



**Brilliance™ Salmonella Agar is the first in a new class of media that incorporates novel Inhibigen™ technology for the isolation and presumptive identification of *Salmonella* species.**

### NOVEL

- The first culture medium to incorporate novel Inhibigen technology for targeted selectivity

### EASY TO USE

- Can be inoculated directly with stool sample or from selective broth

### EASY TO READ

- Purple colonies are presumptive *Salmonella* spp.

### SELECTIVE

- Inhibigen technology provides increased selectivity, reducing growth of competing flora and making plates easier to read

### COST EFFECTIVE

- Increased selectivity screens out negative samples more effectively, reducing the need for further testing



## Oxoid *Brilliance* Salmonella Agar

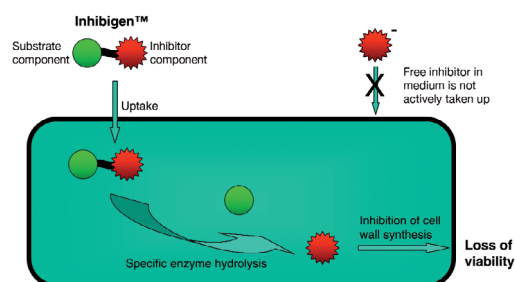
The Inhibigen contained in this medium specifically targets *E. coli*, a particular benefit when testing faecal samples. Additional compounds are added to suppress growth of other competing flora. Differentiation of *Salmonella* from the other organisms that grow on *Brilliance* Salmonella Agar is achieved through the inclusion of two chromogens that target specific enzymes: caprylate esterase and  $\beta$ -glucosidase. The action of the enzymes on the chromogens results in a build-up of colour within the colony. The colour produced depends on which enzymes the organisms possess.

The action of caprylate esterase present in all salmonellae results in a purple colony. Some Enterobacteriaceae species also produce caprylate esterase, but these are differentiated from *Salmonella* by a  $\beta$ -glucosidase substrate. This results in blue colonies, which are easy to distinguish from the purple *Salmonella* colonies.



## New Inhibigen™ Technology

An Inhibigen molecule is made up of two bound components that can only be cleaved by a specific enzyme. In this form the molecule is not toxic. Once inside a microbial cell the bond can be cleaved only if the specific target enzyme is present. Once the bond is cleaved an inhibitor molecule is released and disrupts cell wall synthesis, causing death of the organism. As cells die and lyse, free inhibitor is released but cannot be taken up by other cells, resulting in targeted inhibition.



Oxoid *Brilliance* Salmonella Agar is for *in vitro* diagnostic use only, by experienced microbiologists. It must not be used beyond the stated expiry date, or if the product shows any sign of deterioration.

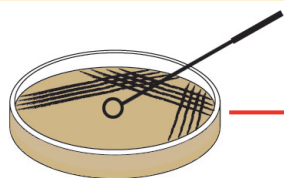
As with all *Salmonella* media there are a small number of atypical strains that may give anomalous results or fail to grow, especially when low numbers are present. Media should be validated by the end-user, under local conditions.

Identifications are presumptive and should be confirmed.

REFERENCE: 1. Data on file at Oxoid

### Testing Faecal Samples

Inoculate *Brilliance* Salmonella plate directly with pea sized bead or loopful of specimen.

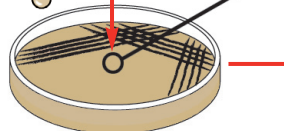


Purple  
*Salmonella*

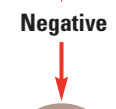
**Positive**

Incubate plates at 37°C for 24h ± 3h

or



Pre-enrich in suitable selective broth prior to inoculation onto a *Brilliance* Salmonella plate. Use an incubation protocol appropriate to the broth chosen.



Blue  
*Klebsiella/*  
*Enterobacter/Serratia*

**Negative**



Colourless  
*Citrobacter* spp.

### Oxoid *Brilliance* Salmonella Agar

	SIZE/FORMAT	ORDER CODE
Ready-Poured Plates	10 x 90mm plates	PO5098A
Dehydrated Culture Medium	500g	CM1092B
Selective Supplement	10 vials	SR0194E

The first medium to feature Inhibigen™ Technology for targeted specificity.

The Oxoid product range offers the complete solution for all your *Salmonella* testing needs.

### Confirmatory Tests

<b>RAPID One</b> Rapid identification of more than 70 Enterobacteriaceae and other oxidase-negative bacteria	20 Tests	R8311006
<b>Microbact GNB 24E</b> Identification of Enterobacteriaceae and other Gram-negative bacilli; microplate format	80 Tests	MB1074A
<b>Salmonella Test Kit</b> Rapid latex agglutination test for the presumptive identification of <i>Salmonella</i> spp.	100 tests	DR1108A
<b>Wellcolex Colour Salmonella Kit</b> Rapid latex agglutination test for detection and presumptive serotyping of <i>Salmonella</i> spp.	50 tests	R30858301
<b>Salmonella Agglutination Sera</b> A comprehensive range of agglutination sera is available for <i>Salmonella</i> serotyping		

For more information about these and other products in the Oxoid *Brilliance* range of chromogenic media, please visit [www.oxoid.com](http://www.oxoid.com)



Oxoid, Wade Road, Basingstoke,  
Hants, RG24 8PW UK.

Tel: +44 (0) 1256 841144  
Fax: +44 (0) 1256 329728  
Email: [oxoid.info@thermofisher.com](mailto:oxoid.info@thermofisher.com)

[www.oxoid.com](http://www.oxoid.com)  
[www.thermofisher.com](http://www.thermofisher.com)

DEDICATED TO MICROBIOLOGY