

Diagnose *C. difficile* with Oxoid

Sample Collection

Liquid or unformed stools, fresh or stored <72hrs at 2-8°C

Culture

(Optional: alcohol shock treatment)

Inoculate selective medium

C. difficile Selective Agar (CCFA)
order code [PB5054A/PB0218A](#)

Brazier's *C. difficile* Selective Agar
order code [PB5191A/PB1055A](#)

C. difficile Selective Agar (CCFA)
order codes [CM0601B](#) & [SR0096E](#) + 5% blood

C. difficile Moxalatum Norfloxacin
(CDMN) Agar
order codes [CM0601B](#) & [SR0173E](#)
+ 5% blood

Incubate anaerobically at 35-37°C for 24-48 hrs

AnaeroJar & AnaeroGen™ 2.5 litre
order codes [AG0025A](#) & [AN0025A](#)

Anaerobic Jar & AnaeroGen 3.5 litre
or Anaerobic Gas Pack plus catalyst
order codes: [HP0011A](#) & [AN0035A](#) or
[BR0038B](#) plus [BR0042A](#)

AnaeroGen Compact
order code [AN0010C](#)

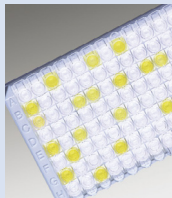
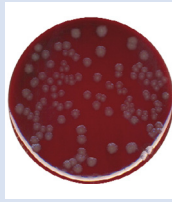
AnaeroGen W-Zip Compact
order code [AN0010W](#)

Suspect colony

C. difficile Test Kit
order code [DR1107A](#)

Biochemical ID

RapID™ ANA II
order code [R8311002](#)



Toxin Detection

C. difficile Toxin A Test
order code [TD0970A](#)

Xpect™ *C. difficile* Toxin A/B
order code [R24650](#)

ProSpec™ *C. difficile* Toxin
A/B Microplate Assay*
order code [R244596](#)

Clostridium difficile

Optional

Culture: for epidemiological studies; to investigate patients with severe disease; for suspect cases with negative stool results; and for antibiotic susceptibility testing

Susceptibility Testing: order codes for M.I.C.Evaluator™ strips:
Penicillin G [MA0100D&F/MA0101D&F](#), Metronidazole [MA0103D&F](#),
Imipenem [MA0115D&F](#), Amoxicillin/Clavulanic acid [MA0107D&F](#).